



WITH  
**eXP**  
Technology

**S-scan**  
Esaote Dedicated MRI

The Next Step  
in Office MRI

**e**saote

# Introducing S-scan the Next Step in Office MRI

Based on extensive customer feedback and years of engineering, **Esaote** has designed the **S-scan with eXP Technology**, an optimized MRI scanner for any practice with a substantial musculoskeletal work-load. The **S-scan** covers all musculoskeletal anatomy, from foot to shoulders including the most important spine segments including L and C-spine.

## **S-scan from Esaote, quality in MSK imaging**

Since 1993, **Esaote** has been developing and producing MRI systems specifically for musculoskeletal imaging. Esaote MRI systems are designed and optimized specifically to meet the demanding needs of MSK professionals.

S-scan integrates our 20+ years of MRI experience into a system that provides you outstanding image quality and an easy to use and install system.



@XP  
Technology





# Esaote market leader in MSK MRI systems

Musculoskeletal MRI is the second most requested MRI study behind neuro imaging. Esaote's focus is MSK MRI and we have become the world leader in that area.

Esaote systems are used daily in many clinics and hospitals all over the world for routine clinical use as well as for research. Esaote systems are unique as they are extremely easy to use and combine excellent image quality with optimum patient comfort.

## Efficiency with S-scan musculoskeletal MRI

An efficient MRI system will provide you: ease of use, simple patient workflow, cost effectiveness and outstanding image quality. S-scan has been developed to provide all of those features and more. The open design for fast and easy patient positioning, gantry display with real-time, DICOM worklist, network integration, no cryogens and everything in a small foot print. It all adds up to make S-scan an efficient and cost effective MRI regardless of whether you perform one or twenty examinations per day.



## Esaote Dedicated MRI

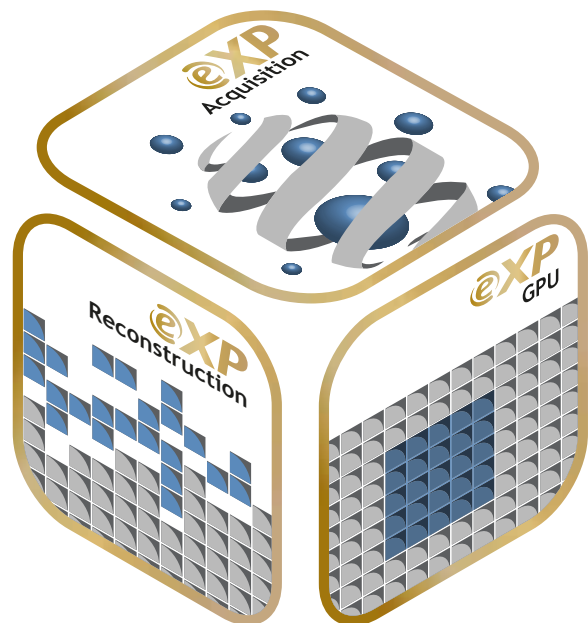
Esaote's ever-growing family of innovative dedicated systems have been on the market for 20 years and over 2400 systems have been sold worldwide.





# @XP Technology

@XP Technology provides faster overall system response thanks to a number of sophisticated MRI software techniques and a high-power workstation.



@XP



## @XP Performance enhancements

By combining sophisticated acquisition and reconstruction methods such as SpeedUp and TR reduction (Patent pending), eXP will substantially improve the MRI examination by reducing scan times and improving image quality.



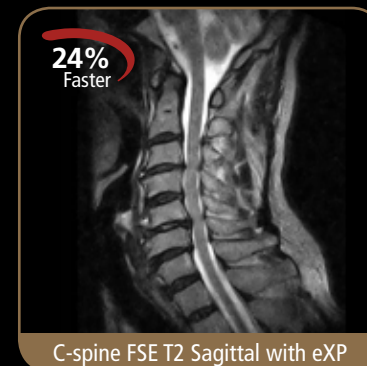
L-spine FSE T2 Sagittal



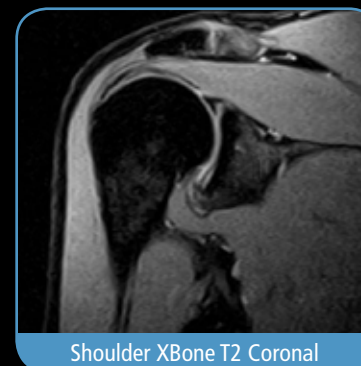
L-spine FSE T2 Sagittal with eXP



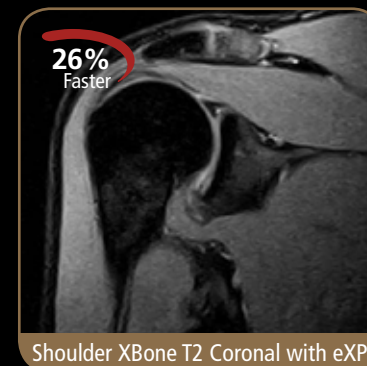
C-spine FSE T2 Sagittal



C-spine FSE T2 Sagittal with eXP



Shoulder XBone T2 Coronal



Shoulder XBone T2 Coronal with eXP



Ankle GE Axial



L-spine FSE T2 Sagittal



Foot GE T1 Coronal



Knee 3D SHARC Sagittal



L-spine 3D HYCE Axial



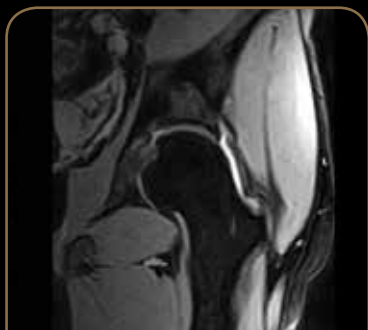
Knee FSE T2 Axial



L-spine FSE T2 Sagittal



C-spine FSE T2 Sagittal



Hip X BONE T2 Coronal



Elbow GE T2 Sagittal



Shoulder SE T1 Coronal



Cervical Spine 3D Hyce

S-scan, unique wide  
asymmetric patient table





# S-scan patient positioning

## S-scan: easy patient access

Easy patient access is one of the features that distinguishes the S-scan as an ideal system for more advanced applications such as MRI arthrography. The wide opening and compact magnet provide easy access to the patient.

## S-scan: open gantry and rotating table

S-scan features a very wide, asymmetric rotating table. This wide table not only makes patient positioning very easy, it also gives maximum stability and comfort to the patient for an easy setup and better images.

## S-scan: real-time positioning

Fast error free positioning with the real-time feature that includes fast sequences and a display on the system gantry. Start scout scan directly from the gantry and check patient positioning without running back and forth to the console. The simplest and fastest way to check correct patient positioning.

## S-scan coils

The S-scan comes with a complete set of RF coils, from foot to spine.



**Shoulder**  
Coil DPA



**Knee**  
Coil DPA



**Wrist/Hand**  
Coil DPA



**Ankle/Foot**  
Coil DPA



**Optional Cervical  
Spine**  
Coil DPA



**Optional  
4 Channel  
Lumbar Spine**  
Coil



**Lumbar Spine**  
Coil DPA



**Cervical Spine**  
Coil  
Complete with  
flexion and extension  
options



**Flexible**  
Coil



**Optional TMJ**  
Coil

# S-scan: connected to MSK needs

## Connectivity

The S-scan includes complete network, archiving and documentation features to work either stand alone or as part of an integrated environment.

As a stand-alone scanner: S-scan comes with an integrated DVD archive and retrieve software package, printer output facility and a patient-CD package.

As a networked system: S-scan is DICOM compliant, and offers smart solutions for connectivity to your PACS and teleradiology.

## Windows® interface

The S-scan is easy to learn as it uses Windows® functionalities.

The interface and protocols are custom designed for musculoskeletal imaging which speeds up and simplifies the examination procedure considerably.

## Remote Service

All Esaote systems come with remote service capability. Many system parameters and system components can be checked via the remote service program specially developed for Esaote MRI systems. The remote service capability allows

Esaote to react to any potential issue and to get you up and running faster!



## S-scan economics

S-scan is one of the most economical MRI systems available, featuring easy installation, the patented Esaote RF pavilion, low energy consumption, no cryogenes, and remote service capability. These features allow S-scan to be suitable for sites with a limited patient work-load.

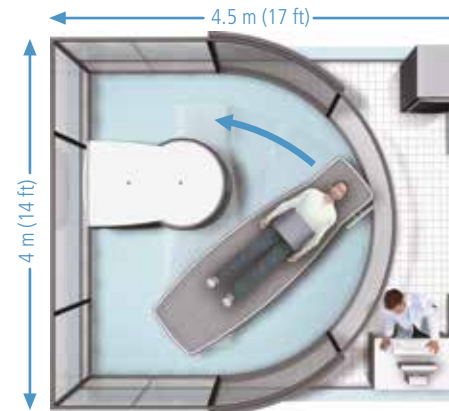
## S-scan easy to install and maintain

S-scan is a "one room" MRI system which means that the complete system, magnet, electronics and console can be installed in a single room of only 20 m<sup>2</sup> (238 ft<sup>2</sup>).

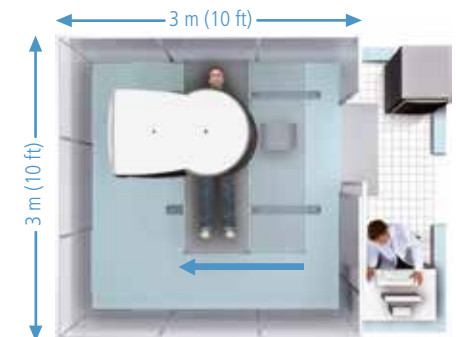
- S-scan is based on an optimized permanent magnet so no cryogenes and no complicated cooling systems are required.
- Dedicated shielding available. The Esaote dedicated shielding is a pavilion style independent shielding that can be installed without any renovation to the space.
- Fast and high quality service. Thanks to the built-in remote service capability, technical assistance is fast and efficient.

## S-scan, compact configuration

The S-scan also offers a compact configuration (optional) for smaller installation sites. A specially designed compact bed is provided which can be accommodated in an RF pavilion of just 9 m<sup>2</sup> (100 ft<sup>2</sup>).



Standard Configuration



Compact Configuration



Specifications subject to change without notice.  
Information may refer to products or modalities not yet approved in all countries.  
For further details, please contact your Esaote sales representative.  
Windows® is a registered trademark of Microsoft Corporation.



0123

## Esaote S.p.A.

International Activities: Via di Caciolle, 15 50127 Florence, Italy, Tel. +39 055 4229 1, Fax +39 055 4229 208, [international.sales@esaote.com](mailto:international.sales@esaote.com)

Domestic Activities: Via A. Siffredi, 58 16153 Genoa, Italy, Tel. +39 010 6547 1, Fax +39 010 6547 275, [info@esaote.com](mailto:info@esaote.com)

[www.esaote.com](http://www.esaote.com)

### FRANCE

Esaote France S.A.R.L.  
ZA du Bel Air  
10, rue de Témara, 78105 Saint Germain en Laye  
Tel. +33 1 8204 8900, Fax +33 1 3061 7210  
[info@esaote.fr](mailto:info@esaote.fr)

### GERMANY

Esaote Biomedica Deutschland GmbH  
Max-Planck-Straße 27a  
50858 Köln  
Tel. +49 2234 688 5600, Fax +49 2234 967 9628  
[info@esaote.de](mailto:info@esaote.de)

### SPAIN

Esaote España S.A.  
C/. Pont Reixat, 5  
08960 Sant Just Desvern, Barcelona  
Tel. +34 93 473 2090, Fax +34 93 473 2042  
[info@esaote.es](mailto:info@esaote.es)

### THE NETHERLANDS AND BELGIUM

Esaote Benelux B.V.  
Philipsweg 1  
6227 AJ Maastricht  
Tel. +31 43 3824650, Fax +31 43 3824651  
[benelux@esaote.nl](mailto:benelux@esaote.nl)

### UK

Esaote UK  
14, Cambridge Science Park  
Milton Road, Cambridge, CB4 0FQ  
Tel. + 44 1223 424499, Fax + 44 709 288 0231  
[infoUK@esaote.com](mailto:infoUK@esaote.com)

### NORTH AMERICA

Esaote North America  
8000 Castleway Drive,  
Indianapolis, IN 46250  
Tel. +1 317 813 6000, Fax +1 317 813 6600  
[inquire@esaoteusa.com](mailto:inquire@esaoteusa.com)

### BRASIL

Esaote Healthcare do Brasil  
Rua Geraldo Flausino Gomes, 78  
CEP: 04575-060 São Paulo - SP  
Tel. +55 11 2789-0400 Fax +55 11 2789-0432  
[comercial@esaote.com.br](mailto:comercial@esaote.com.br)

### ARGENTINA

Esaote Latinoamérica S.A.  
San Martín 551, Cuerpo 'C', Piso 8, (C1004AAK)  
Buenos Aires  
Tel. +54 11 4326 1832, Fax: +54 11 4328 1245  
[info@esaote.com.ar](mailto:info@esaote.com.ar)

### INDIA

Esaote Asia Pacific Diagnostic Private Limited  
DLF IT Park, A - 44 & 45, Tower- C, Ground Floor,  
Sector- 62, Noida, Uttar Pradesh, India  
Pin Code: 201 301  
Tel. +91 120 4732444, Fax +91 120 4750148  
[info@esaote.in](mailto:info@esaote.in)

### HONG KONG AND FAR EAST

Esaote China Ltd  
18/F, 135 Bonham Strand Trade Centre,  
135 Bonham Strand, Sheung Wan, Hong Kong  
Tel. +852 2545 8386, Fax +852 2543 3068  
[esaote@esaotechina.com](mailto:esaote@esaotechina.com)

### CHINA

Esaote Shenzhen Medical Equipment  
Room 2608, Tower B  
Beijing Global Trade Center  
36 North Third Ring Road East,  
Dongcheng District, 100013, Beijing  
Tel. +86 010 58257766, Fax +86 010 52257760

### RUSSIAN FEDERATION AND CIS

Esaote Sp.A.  
18 Leningradsky prospekt  
Off. 5 and 6, Moscow 125040  
Tel. +7 495 232 0205, Fax +7 495 232 1833  
[esaotemoscow@yandex.ru](mailto:esaotemoscow@yandex.ru)