

In touch with **Physiotherapy**



MyLabOneTM
Musculoskeletal

**Focus
Motivation
Rehabilitation**



Physiotherapy-dedicated ultrasound system

- High-resolution and high-contrast BW image
- Simple and intuitive user interface
- Full touch screen
- High Sensitivity Color
- MyLibrary user reference guide
- Dedicated accessories and tools
- Up-to-date connectivity
- Dedicated ergonomics



Technologies

Physiotherapy



XHF

The superior limit of the bandwidth provides very high detail and precision in superficial imaging.



XView

Elaborates the pattern of every single frame at the pixel level, eliminating speckle and noise artifacts.

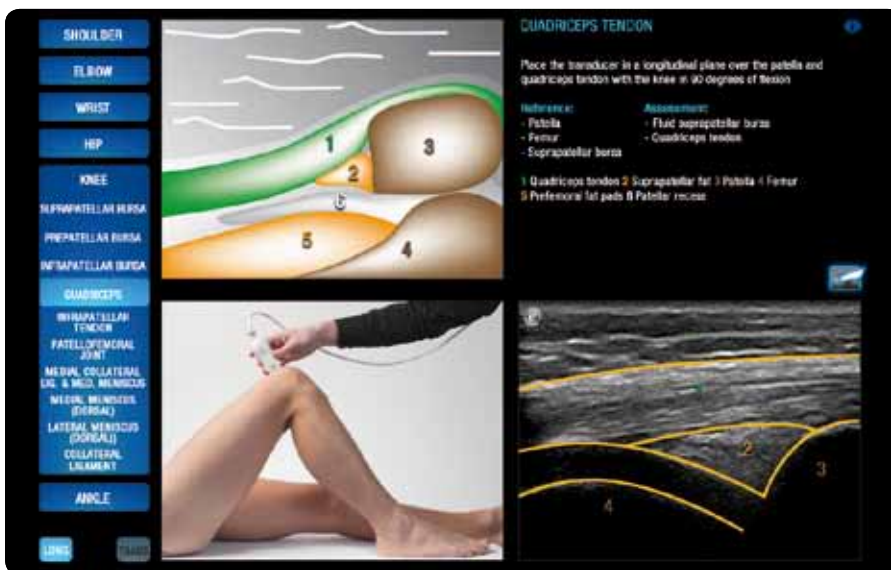


MView

Combines contributions of steered ultrasound beams to drastically optimize image quality, increasing diagnostic confidence.

TEI™

This technology dramatically improves the image quality by increasing signal to noise ratio and enhancing contrast resolution.



Probes range

Remote controls integrated on the probe (customizable)

Made in cooperation with MSc Marc J.H. Schmitz, Physiotherapist, Manual therapist, Ultrasonographer, Kine Care, Roermond and Amsterdam, The Netherlands.

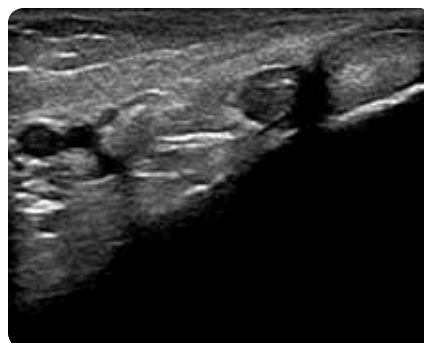
MyLibrary

Innovative application-dedicated tool for users' reference.

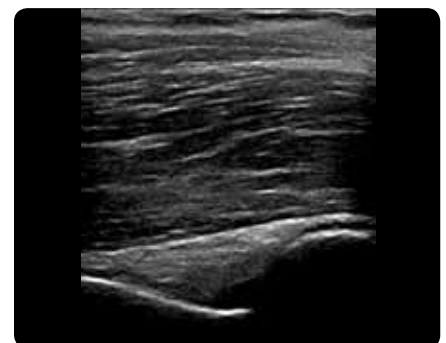
- Anatomical atlas
- "How to do" reference pictures
- Extensive guide, with more than 60 scan positions of the shoulder, elbow, wrist, hip, knee and ankle



Shoulder, Longitudinal Supraspinatus Tendon



Ankle, Transverse Tom Dick and Very Nervous Harry



Elbow, Longitudinal Coronoid Fossa