

MyLabOne accessories

Product Update

Ultrasound Product:

- > MyLabOne Regional Anaesthesia
- > MyLabOne Musculoskeletal
- > MyLabOne Vascular
- > MyLabTouch
- > MyLabSat
- > MyLabSatVet
- > MyLabOneVet

Prepared by: Manuel Heiligers

Approved by: Joop Geijssen

Index

Introduction	3
Desk Stand Pro	4
Desk Stand Basic.....	6
Basic Stand.....	7
Roll Stand Pro.....	8
Roll Stand Basic.....	11
Vet Carrying Plate.....	13
Multicon.....	14
External Battery Charger.....	16
Double Footswitch	17
Silicon Rubber Protection Cover	18
Carrying Belt.....	19
Cleaning wipes	20
Additional battery pack.....	21
Additional Mains Adapter.....	22

Introduction

Dear Colleagues,

With this product update we want to give you an update regarding the main accessories for the MyLabOne Regional Anaesthesia, MyLabOne Musculoskeletal, MyLabOne Vascular, MyLabTouch, MyLabSat, MyLabOneVet and MyLabSatVet (in general referred also as MyLabOne in this document).

One of the major changes is the replacement of the optional Desk Stand and Roll Stand by a Basic and Pro version. Furthermore we would like to give some more insight in the following accessories:

- Basic stand
- Vet Carrying Plate
- Multicon
- External Battery Charger
- Double Footswitch
- Silicon Rubber Protection Cover
- Carrying Belt
- Cleaning and disinfectant wipes
- Additional battery pack
- Additional mains adapter

Desk Stand Pro



Desk Stand Pro has several extra connectivity options



Desk Stand Pro configured for wall mount

- Dimensions: Approx. 230 (L) x 200 (W) x 290 mm (H)
- Weight: Approx. 3.8 kg
- Adjustable angle scanner support: Approx 70°



MyLabOne with Desk Stand Pro



MyLabOne with Desk Stand Pro configured for wall mount. Combination with Multicon is also possible.



Article number: 152003100

In situations where the MyLabOne is used on a desk or table, the system can be used in combination with a Desk Stand Pro. The Desk Stand Pro has several extra connectivity options. This makes it possible to connect various peripherals which enables you to integrate the system in your environment in a way that it meets your requirements.

The Desk Stand Pro has the following additional connectivity options:

- 3 extra USB 2.0 ports
- LAN RJ45 network connector
- Footswitch connector
- DVI-I VGA connector
- Audio line-out connector
- Microphone connector
- Docking station connector
- Power connector for power supply

Additional the Desk Stand Pro, like the MyLabOne system itself, has a VESA mount. This makes it possible to configure the Desk Stand in a way that it can be attached to a wall mount (e.g. articulating arm etc.). With this configuration of the MyLabOne system, Desk Stand Pro and a wall mount, the mobile and flexible aspect of the MyLabOne is maintained, since the MyLabOne can easily be removed from the Desk Stand whenever the MyLabOne is needed on other locations then the wall mount is located.

The current Desk Stand with article number 152000300 **will be replaced with** above mentioned **Desk Stand Pro** article number 152003100. From a functional point of view the differences between the two models are negligible. Most of the modifications have been implemented for production related issues.

Desk Stand Basic



Desk Stand Basic has **no** extra connectivity options



Desk Stand Basic configured for wall mount

- Dimensions: Approx. 230 (L) x 200 (W) x 290 mm (H)
- Weight: Approx. 3.6 kg
- Adjustable angle scanner support: Approx. 70°



MyLabOne with Desk Stand Basic



MyLabOne with Desk Stand Basic configured for wall mount. Combination with Multicon is also possible.

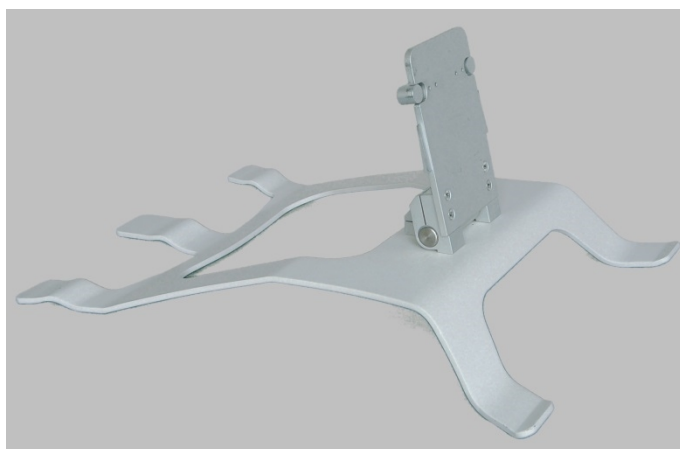


Article number: 152003200

In situations where the MyLabOne is used on a desk or table, the system can be used in combination with a Desk Stand Basic. The Desk Stand Basic has no extra connectivity options other than the power connector for the power supply.

The Desk Stand Basic, like the MyLabOne system itself, has a VESA mount. This makes it possible to configure the Desk Stand in a way that it can be attached to a wall mount (e.g. articulating arm etc.). With this configuration of the MyLabOne system, Desk Stand Basic and a wall mount, the mobile and flexible aspect of the MyLabOne is maintained, since the MyLabOne can easily be removed from the Desk Stand whenever the MyLabOne is needed on other locations then the wall mount is located.

Basic Stand



The Basic Stand has no connectivity options



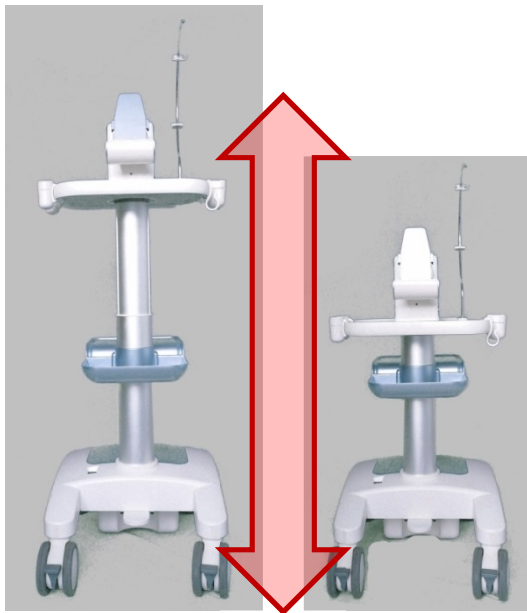
MyLabOne with Basic Stand

- Dimensions:
 - 85 (H) x 310 (W) x 420 mm (D)
 - Scanner support plate in upright position: 200 (H) x 310 (W) x 420 mm (D)
- Weight: Approx. 1.1 kg
- Adjustable angle scanner support: Approx. 80°

Article number: 152002700

The MyLabOne can be used in combination with aluminum Basic Stand. The Basic Stand for MyLabOne has been designed for environments where a more robust solution is needed. The Basic Stand offers a very stable positioning allowing still tilting of the system. The opportunity to close the stand and to block the system safely makes it possible to carry the stand together with the system in an easy way. This solution can be then very useful especially to bring the system to the patient. The Basic Stand has no connectivity options

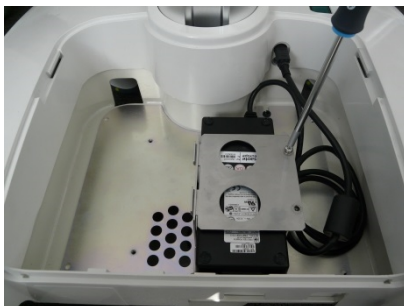
Roll Stand Pro



Roll Stand Pro is height adjustable



Roll Stand Pro has extra connectivity options



The Power Supply can be mounted in the base of the Roll Stand Pro



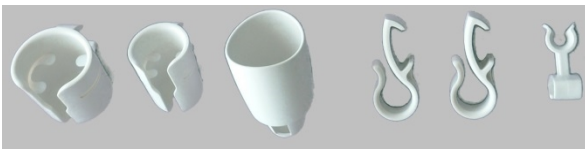
MyLabOne with Roll Stand Pro

• Dimensions

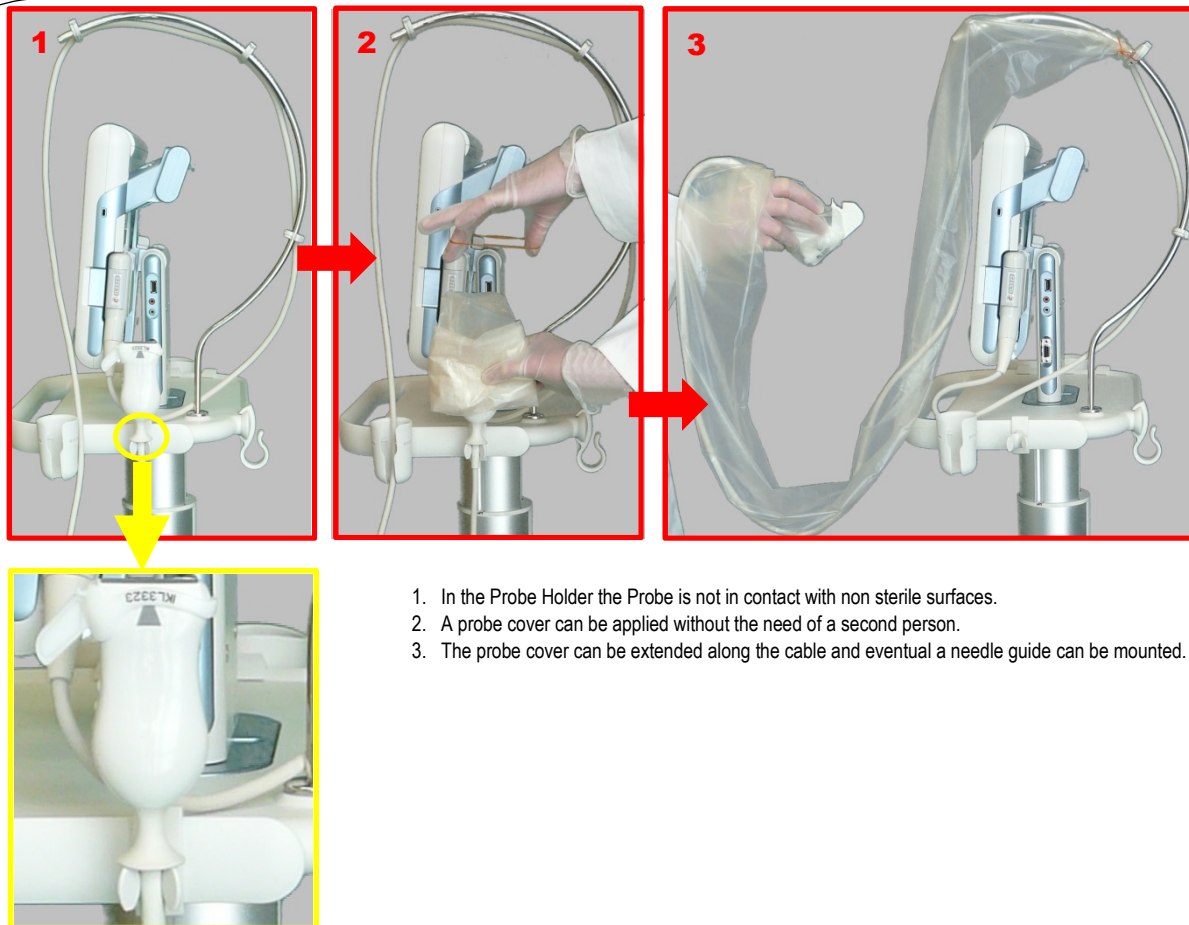
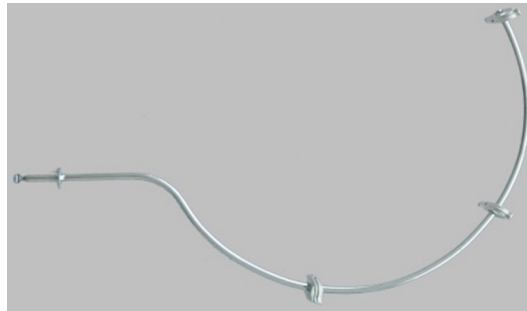
- Height **with MyLabOne** installed: Approx. Min. 1130 – Max. 1370 mm
(measured from ground to top of MyLabOne system, without cable hook)
- Height **without MyLabOne** installed: Approx. Min. 1060 – Max. 1300 mm
(measured from ground to top of scanner support, without cable hook)
- **Work surface** height: Approx. min. 780 – Max. 1020 mm
(measured from ground to table)
- Work surface: Approx. 300 (L) x 410 mm (W)
- Printer tray surface: Approx. 390 (L) x 280 mm (W)
- Base dimensions: Approx. 570 (L) x 470 mm (W)
- Weight: Approx. 26 kg
- Adjustable angle scanner support: Approx. 70°

Article number: 152004300

In situations where there is the need to use the MyLabOne in a mobile configuration, the system can be used in combination with a Roll Stand. The Roll Stand Pro has four swiveling wheels with brakes. The pedal at the base of the Roll Stand Pro can be used to adjust the height. In the base of the Roll Stand there is the option to mount the Power Supply. The Roll Stand has a dedicated tray for peripherals such as a printer. The sides of the work surface can be used to attach several probe holders which are included. Also a probe holder dedicated to Regional Anaesthesia and a cable holder are included to ensure an easy and safe workflow in sterile environments.



Included Probe- and Cable Holder(s)



1. In the Probe Holder the Probe is not in contact with non sterile surfaces.
2. A probe cover can be applied without the need of a second person.
3. The probe cover can be extended along the cable and eventual a needle guide can be mounted.

Dedicated Regional Anaesthesia Probe- and Cable Holder, to ensure an easy and safe workflow in sterile environments

The Roll Stand Pro has several extra connectivity options. This makes it possible to connect various peripherals which enables you to integrate the system in your environment in a way that it meets your requirements. The Desk Stand Pro has the following additional connectivity options:

- 3 extra USB 2.0 ports
- LAN RJ45 network connector
- Footswitch connector
- DVI-I VGA connector
- Audio line-out connector
- Microphone connector
- Docking station connector
- Power connector for power supply

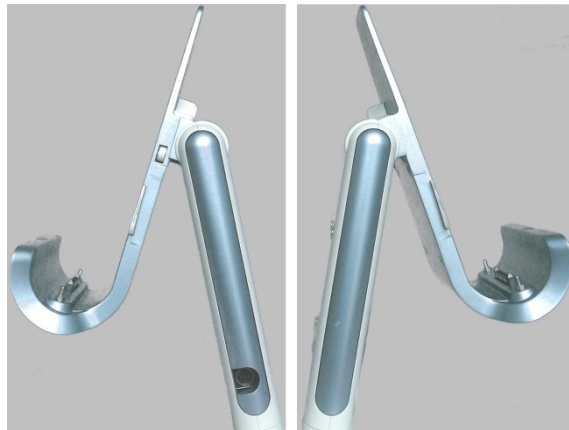
The current Roll Stand with article number 152000400 **will be replaced with** above mentioned **Roll Stand Pro** with article number 152004300. From a functional point of view the differences between the two models are minimal. Most of the modifications have been implemented for production related issues, such as:

- The Base is now in aluminum instead of plastic.
- The Base includes a fan, which provides an active cooling to be able to facilitate future options.
- Due to the modifications in the base, the measurements of the base have increased slightly from 500 (L) x 470 mm (W) to 570 (L) x 470 mm (W). This also has a positive effect on the stability.
- Due to modifications in the gas spring system the min. height of the Roll Stand varies slightly:
Min. Work surface height used to be Approx. 720 mm, now it's Approx. 780 mm *(measured from ground to table)*

Roll Stand Basic



Roll Stand Basic has a fixed height



Roll Stand Basic has **no** extra connectivity options



The Power Supply can be mounted in the dedicated bracket of the Roll Stand Basic



MyLabOne with Roll Stand Basic

- Dimensions
 - Height **with MyLabOne** installed: Approx. 1280 mm
(measured from ground to top of MyLabOne system)
 - Height **without MyLabOne**: Approx. 1210 mm
(measured from ground to top of scanner support)
 - **Worksurface** Height: Approx. 930 mm
(measured from ground to table)
 - Work surface: approx. 300 (L) x 410 mm (W)
 - Base dimensions: Approx. 570 (L) x 470 mm (W)
- Weight: Approx. 18 kg
- Adjustable angle scanner support: Approx. 70°

Article number: 152004200

In situations where there is the need to use the MyLabOne in a mobile configuration, the system can be used in combination with a Roll Stand.

The Roll Stand Basic has a fixed height and four swiveling wheels with brakes. The sides of the work surface can be used to attach several probe holders which are included.



Included Probe- and Cable Holder(s)

The Roll Stand Basic has no extra connectivity options other than the power connector for the power supply. Also it has no dedicated tray for peripherals such as a printer. The power supply can be mounted in the dedicated bracket which is positioned under the work surface. In the base of the Roll Stand Basic there is no possibility to mount a power supply; also there is no active cooling inside the base.

Vet Carrying Plate



Carrying Plate MyLabOne



Included Silicone Cover



Included Probe-, Utility-, and Cable Holder(s)



MyLabOne with Carrying Plate

Article number: 152004100

In veterinary environments where there is the need to use the MyLabOne in a mobile configuration but a Roll Stand is no option, the system can be used in combination with the Carrying Plate.

The sides of the work surface can be used to attach several probe holders which are included.

The package of the Vet Carrying Plate for MyLabOne contains the following items:

- Carrying Plate
- Waist belt
- Shoulder belt
- Padding for shoulder belt
- Two probe holders
- Cable guide
- Utility Hook Black
- Silicon Cover (also available as separate item under article nr. 142000700)

Multicon



- Dimensions: 85 (H) x 310 (W) x 420 mm (D)
- Weight: Approx. 1.1 kg
- Cable length: Approx. 450 mm (L)

MyLabOne Multicon Module



The Multicon module can be used with MyLabOne in all configurations: MyLabOne, Desk Stand, Roll Stand, and Wall Mount.

Article number: 152002600

The Multicon is a very nice and elegant three-transducer module allowing connecting up to three transducers simultaneously to the MyLabOne system and switch the active transducer via software.

This module gives an important plus to the MyLabOne system in markets where more probes are used during procedures. For example:

- Emergency (First Aid in hospitals), where typically at least a phased array and linear probes are required (for FAST protocol and sliding pleura investigations). In some hospitals a convex probe and an endocavity probe may be required too.
- Anaesthesia: when the system is used in mobile configuration (or on wall mount) the anaesthesiologist may want to have easy and quick access to linear transducer (for superficial blocks) and to convex (for deeper blocks). For portable / compact systems with only one probe connector swap of the transducer is necessary; in this regard the availability of the Multicon gives an important plus in workflow.
- MSK: in specialties within MSK linear and convex transducers may be required. Sometimes the availability of a wider medium frequency transducer and narrow high frequency transducer may provide a complete setup to the clinician.
- OB/Gyn: this application requires at least a convex probe (for abdominal scanning) and an endocavity transducer. The set can be extended with the linear transducer for breast scanning.

Note!

The Multicon is only available for the MyLabOne product family.

The configuration includes:

- Multicon module
- Trolley connector
Plastic attachment to install the Multicon module to the MyLabOne roll stand
- Wall Mount connector
Plastic attachment to install the Multicon module to wall mount
- Installation guide
Sheet enclosing instructions on how assembling and installing the Multicon module for the different configurations of MyLabOne



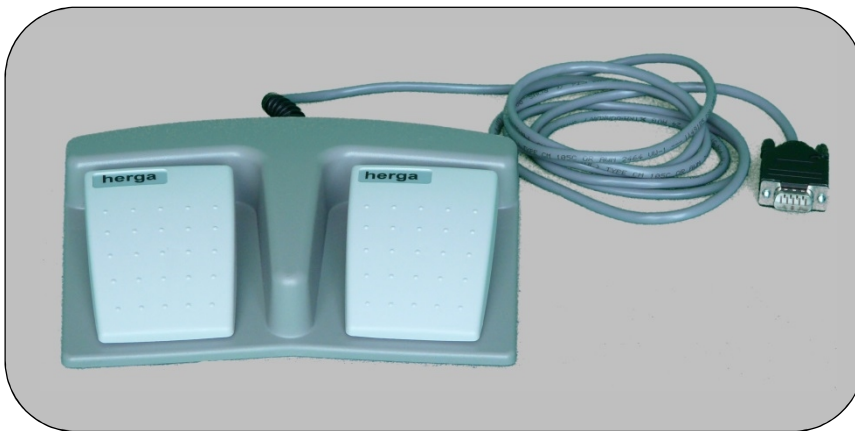
External Battery Charger



Article number: 159000600

The external Battery Charger (battery not incl.) enables you to charge a MyLabOne battery externally, meaning there is no MyLabOne system needed to charge the battery. This is ideal when you have one or more spare batteries for the system and want to charge them independently from the system. The charge time to charge a fully depleted battery is Approx. 2 hours.

Double Footswitch

**Article number: 9102756100**

In situations where the user has to perform multiple actions with the system during an examination there is a Double Footswitch available. This footswitch has 2 user programmable keys which enables the user to program 2 functions available on the user interface of the system such as: Freeze, Color and Doppler etc. The cable length of the footswitch is Approx. 2100 mm (L)

Note!

To use the Footswitch a Desk Stand Pro or a Roll Stand Pro is needed, since they have a Footswitch connector available.

Silicon Rubber Protection Cover



MyLabOne with Silicon Rubber Protection Cover

Article number: 142000700

To provide some level of protection to the housing of the system during use, there is a Protection Cover available. This cover fits tightly around the system and is made of Silicone rubber which makes it flexible and very easy in use.

Carrying Belt



MyLabOne with Carrying Belt

Article number: 152001100

To support the weight of the system there is a Carrying Belt available. This Belt is provided with a shoulder pad which increases the level of comfort and a wrist strap which provides extra stability.

Cleaning wipes



- Wipe Size: 130mm x 220mm
- Weight: 23g/m²
- Count per canister: 125 wipes

Article number: 142000900

The MyLabOne system is delivered with a canister of 125 Sani Cloth Active wipes. These wipes can be used to clean the screen of the system, they remove fingerprints and are also slightly disinfecting. Please consult the user manual for all cleaning, disinfection and sterilization procedures.

Additional battery pack



Li-ion 14.4V

Life expectancy: min. 300 charge/discharge cycles.

Operating time per battery: Approx. 90 Min.

Article number: 152000500

An additional battery pack is available for the MyLabOne system. An additional battery pack can provide more flexibility when using the system on location.

Additional Mains Adapter



Cable length: 125cm
Output: 19 V DC, 120VA, 6.32 A
Input: 100-240 V AC, 47-63Hz, 1.4-0.6A

Article number: 152000200

An additional Mains Adapter (power supply) is available for the MyLabOne system. This can be very useful for instance when the original mains adapter is mounted inside a Roll Stand or just to have a spare one to be more flexible.

Note!

Only use the Mains Adapter (power supply), provided by Esaote, in combination with the MyLabOne system.