

## Top Performance in Action

Alpha

A gold diagonal banner with the text "WITH eHD Technology" in white, positioned over the word "Alpha".

*"Never confuse movement with action"*  
Ernest Hemingway

# @HD Technology

- Enhanced Diagnostic Value
- Maximizing Signal Information
- Low power consumption
- More efficient healthcare

@HD

iQ Probes



@HD  
Pulser

@HD  
Processing

@HD  
Doppler

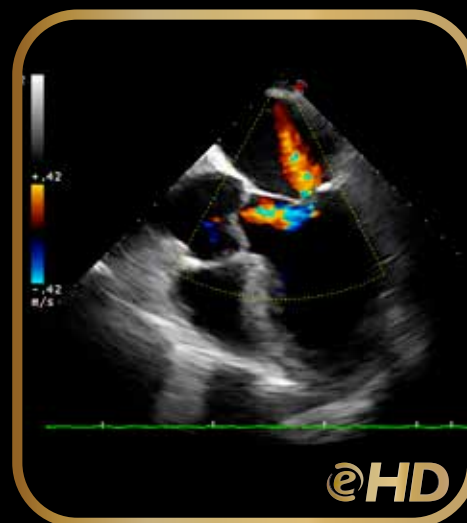
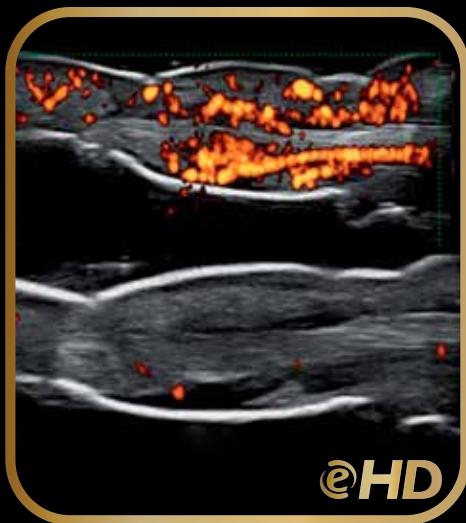
@HD

**eHD** is the Esaote technology to innovate ultrasound imaging and improve the systems' use.

It represents our attention to the diagnostic value, optimizing all the aspects of the chain a signal has to travel through, starting from the echo generated by the patient's body up to the arrival on the system's monitor. It maximizes the efficiency of ultrasound scanning, leaving the sonographer free to concentrate on the patient.

The quality that improves  
your diagnostic confidence.

# A new era in ultrasound





## iQProbes

- Active Matrix Composite Material
- Multiple Adaptive Layers
- Bi-Con Geometric Lens
- Heating Efficiency Control

### MyLabAlpha offers a wide range of iQ Probes

In addition to convex, linear and phased array, several special probes (such as endocavity, trans esophageal, intraoperative, volumetric, etc.) can be connected.



### Esaote appleprobe, an innovative approach in ergonomics

The appleprobe keeps hand and wrist in their natural alignment distributing the grip throughout the whole hand as One grips an apple. You can relieve tension on the fingers and the wrist, when not scanning, simply by keeping the probe between the fingers.

The appleprobe has been designed for both grip:

- innovative palm hold
- conventional pincer hold



red dot design award  
honourable mention 2008



# Top Performance Ultrasound, anytime and anywhere

MyLabAlpha has been designed to deliver top performances and high dynamism in a very reduced size and weight.

Thanks to the eHD technology this system provides fast, optimized data transfer, which leads to an improved user comfort and clinical outcome as well as department throughput and competence.





# @Touch

**A standard ultrasound system becomes a personal application-specific diagnostic tool.**

Customized settings and multiple functions can be organized according to clinical practice and preferences and then easily recalled by just pressing a button.



# Unparalleled throughput

The intelligent software and large sized touch-screen allow unique features to be delivered with MyLabAlpha. The Productivity-Oriented Platform is the core of the architecture: easy access, customized settings and functions, standardized clinical protocols and immediate settings.

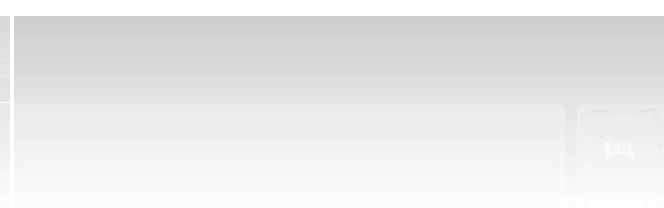
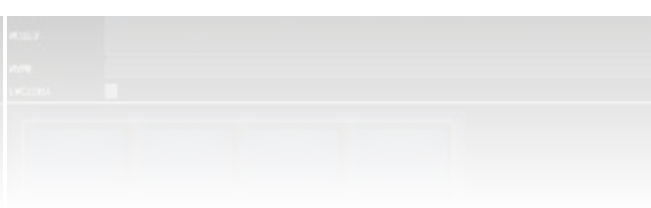
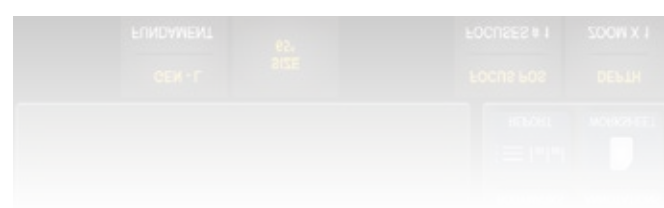
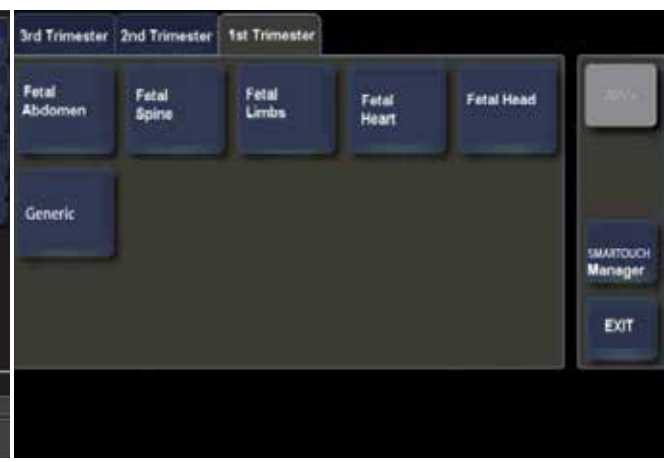
## eTouch

By pressing the eTouch button, the user can display the controls and functions that he really needs in clinical practice: improved comfort and reduced examination time.

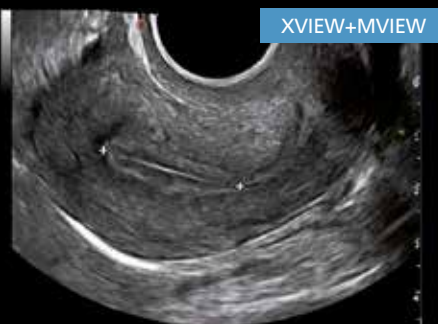
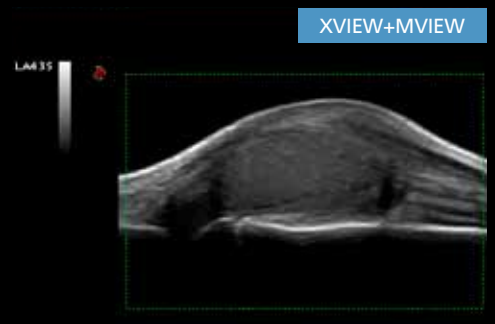
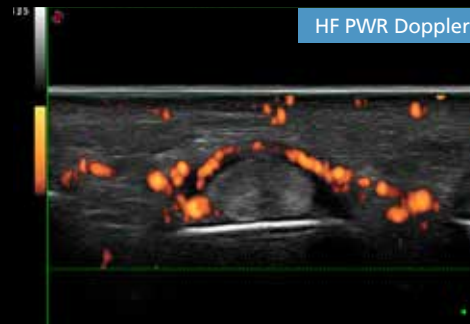
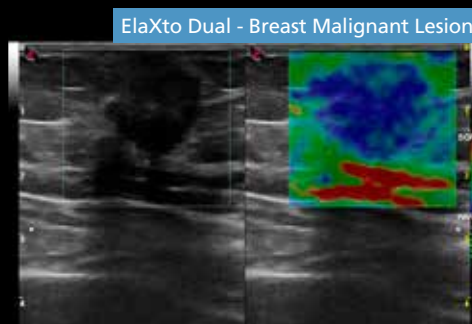
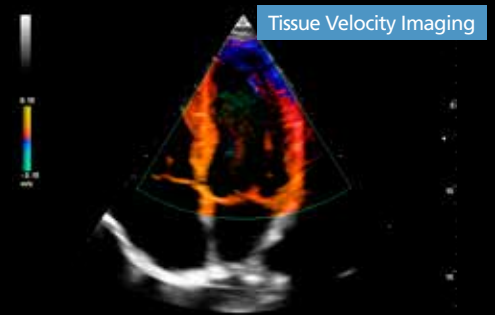
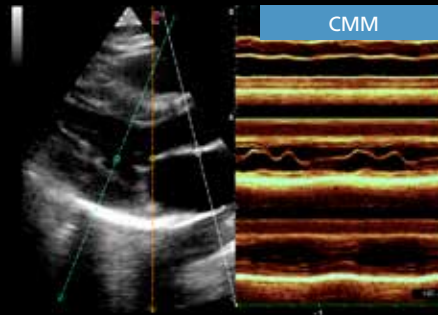
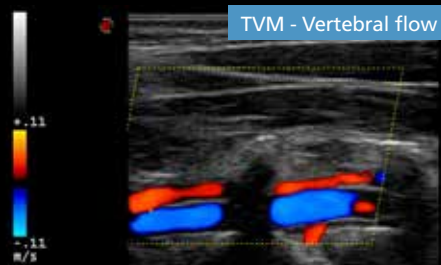
eTouch dedicated session allows the user to record different macros. Based on any single user's needs and preferences, multiple functions can be included with just one touch: less keystrokes and faster diagnosis.

## SmartTouch

Wide ranging image settings, user preferences and clinical targets, normally require time and attention. Smart-touch delivers dedicated settings for any anatomical district. Optimal images are displayed with just one touch.



# Exclusive Premium Performance



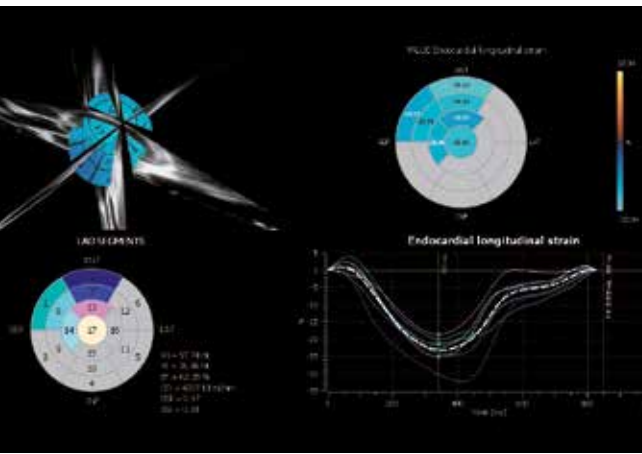


# Never Seen on a Portable System

The powerful MyLabAlpha platform delivers features and performance never seen on a portable system, to deliver reliable diagnosis at the point-of-care and portability without compromises.

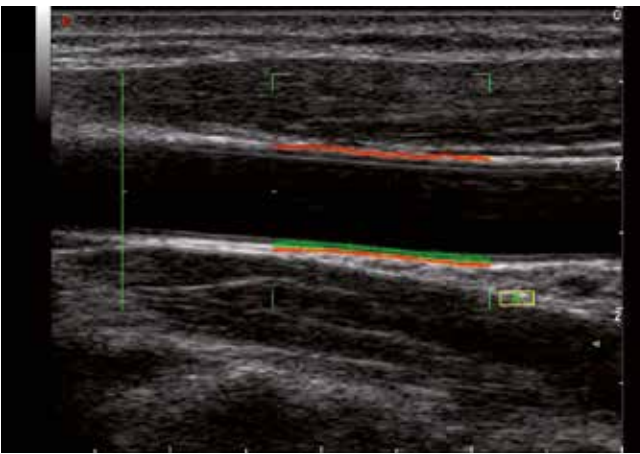
## Xstrain 4D

By combining XStrain analysis of standard apical views (2Ch, 4Ch, ALAX), **XStrain 4D** provides complete volumetric assessment of left ventricle. Global and regional curves as well as strain/strain-rate and volume measurements may be easily and quickly displayed.



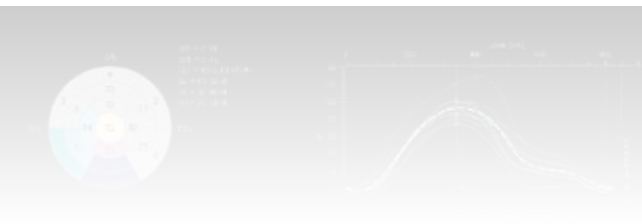
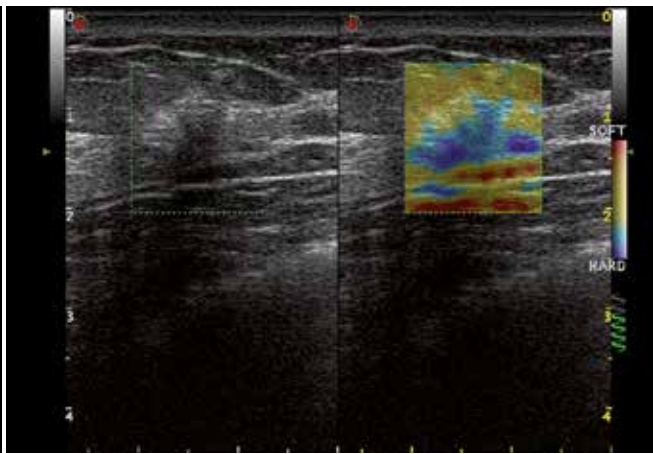
## RFQIMT

**RFQIMT** (Quality Intima Media Thickness) is based on the innovative Esaote's RF-data technology. Accuracy, ease of use, real-time feedback, graphs and report are part of this innovative package for early-diagnosis clinical practice.



## ElaXto

**ElaXto** is a non-invasive method to support the physician in assessing tissue elasticity. The differences in tissue responses are detected and visualized in real-time to help the physicians in the daily clinical routine. iQ Probes' high sensitivity increases exam reproducibility and reduces operator dependence.



# Flexibility

- Easy Portability
- Innovative “ready-to-go” solutions
- Comfortable workstations
- Wide range of accessories



# Wireless Ultrasound

- Extended export capability to PC (Windows®, Mac®) and mobile devices (tablets, smart-phones, etc ...)
- Easy networking, standard and wireless
- DICOM and IHE compliance



MyLab App

The new app to  
visualize images  
and videos on  
mobile devices



# MyLab<sup>™</sup>Alpha

## Top Performance in Action

WITH  
**@HD**  
Technology

*“Never confuse movement with action”*  
*Ernest Hemingway*



Windows® is a registered trademark of Microsoft Corporation  
Mac® is a registered trademark of Apple Inc.



**ESAOTE S.p.A.**  
Via Enrico Melen, 77 16152 Genova, ITALY, Tel. +39 010 6547 1, Fax +39 010 6547 275, [info@esaote.com](mailto:info@esaote.com)

**FRANCE**  
Esaote Medical SAS  
ZA du Bel Air  
10, rue de Témara, 78105 Saint-Germain-en-Laye  
Tel. +33 1 8204 8900, Fax +33 1 3061 7210  
[info@esaote.fr](mailto:info@esaote.fr)

**BRAZIL**  
Esaote Healthcare do Brasil  
Rua Tomas Carvalhal, 711  
04006-001 São Paulo SP  
Tel. +55 11 2789 0400 Fax +55 11 2789 0432  
[comercial@esaote.com.br](mailto:comercial@esaote.com.br)

**GERMANY**  
Esaote Biomedica Deutschland GmbH  
Max-Planck-Straße 27a  
50858 Köln  
Tel. +49 2234 688 5600, Fax +49 2234 967 9628  
[info@esaote.de](mailto:info@esaote.de)

**ARGENTINA**  
Esaote Latinoamérica S.A.  
San Martín 551, Cuerpo 'C', Piso 8, (C1004AAK) Buenos Aires  
Tel. +54 11 4326 1832, Fax: +54 11 4328 1245  
[info@esaote.com.ar](mailto:info@esaote.com.ar)

**SPAIN**  
Esaote España S.A.  
C/. Pont Reixat, 5  
08960 Sant Just Desvern, Barcelona  
Tel. +34 93 473 2090, Fax +34 93 473 2042  
[info@esaote.es](mailto:info@esaote.es)

**INDIA**  
Esaote Asia Pacific Diagnostic Private Limited  
DLF IT Park, A - 44 & 45, Tower- C, Ground Floor, Sector- 62, Noida, Uttar Pradesh, India  
Pin Code: 201 301  
Tel. +91 120 4732444, Fax +91 120 4750148  
[info@esaote.in](mailto:info@esaote.in)

**THE NETHERLANDS AND BELGIUM**  
Esaote Benelux B.V.  
Philipsweg 1  
6227 AJ Maastricht  
Tel. +31 43 3824650, Fax +31 43 3824651  
[benelux@esaote.nl](mailto:benelux@esaote.nl)

**HONG KONG AND FAR EAST**  
Esaote China Ltd  
18/F, 135 Bonham Strand Trade Centre,  
135 Bonham Strand, Sheung Wan, Hong Kong  
Tel. +852 2545 8386, Fax +852 2543 3068  
[esaote@esaotechina.com](mailto:esaote@esaotechina.com)

**UK**  
Esaote UK  
14, Cambridge Science Park  
Milton Road, Cambridge, CB4 0FQ  
Tel. + 44 1223 424499, Fax + 44 709 288 0231  
[infoUK@esaote.com](mailto:infoUK@esaote.com)

**CHINA**  
Esaote Shenzhen Medical Equipment  
Room 2608, Tower B  
Beijing Global Trade Center  
36 North Third Ring Road East,  
Dongcheng District, 100013, Beijing  
Tel. +86 010 58257766, Fax +86 010 52257760

**NORTH AMERICA**  
Esaote North America  
8000 Castleway Drive,  
Indianapolis, IN 46250  
Tel. +1 317 813 6000, Fax +1 317 813 6600  
[inquire@esaoteusa.com](mailto:inquire@esaoteusa.com)

**RUSSIAN FEDERATION AND CIS**  
Esaote S.p.A.  
18 Leningradsky prospekt  
Off. 5 and 6, Moscow 125040  
Tel. +7 495 232 0205, Fax +7 495 232 1833  
[esaotemoscow@yandex.ru](mailto:esaotemoscow@yandex.ru)

Technology and features are system/configuration dependent.  
Specifications subject to change without notice.  
Information might refer to products or modalities not yet approved in all countries.  
Product images are for illustrative purposes only.  
For further details, please contact your Esaote sales representative.

