

# In touch with Anaesthesia



## MyLabOne

An ultrasound system dedicated to Regional Anaesthesia is a fundamental tool in any anaesthesiology department.

High-contrast and high-resolution ultrasound image allow an easy and confident identification of the anatomical structures in the region of interest.

Dedicated ergonomics guarantees comfortable and straightforward workflow.

The possibility to use the system on roll-stand, desk stand or wall-mounted offers a high flexibility in the system configuration and use, satisfying any specific requirement from any clinical site.

Transducers equipped with keys permit to control functions remotely without the need to reach over the user interface: a perfect and safe solution when working in a sterile environment!

An interactive tutorial integrated in the system provides an educational tool on-board to increase confidence in regional anaesthesia procedures.



## Regional Anaesthesia

Nerves are clearly and immediately identified inside the surrounding structures. The procedures become easier and safer. The minimum amount of anaesthetic is properly addressed and the effect is maximised.

### Upper extremities

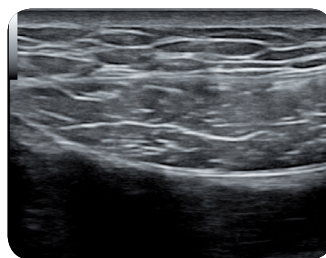
- > Brachial plexus
- > Interscalene
- > Infraclavicular/Supraclavicular
- > Axillary

### Lower extremities

- > Femoral
- > Popliteal
- > Sciatic

### Abdomen

- > Rectus sheath
- > Iliohypogastric / Ilioinguinal

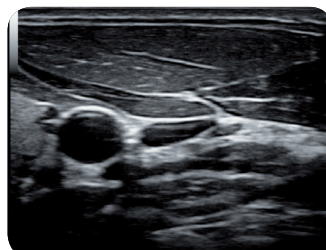


## Line Placement

Vascular structures are easily identified under the ultrasound guide. Precise needle location avoids second trial even in difficult situations or bad patient conditions. Procedures become faster and comfortable.

- > **Central venous access** commonly attempted at the internal jugular vein, subclavian vein, femoral vein, or arm veins

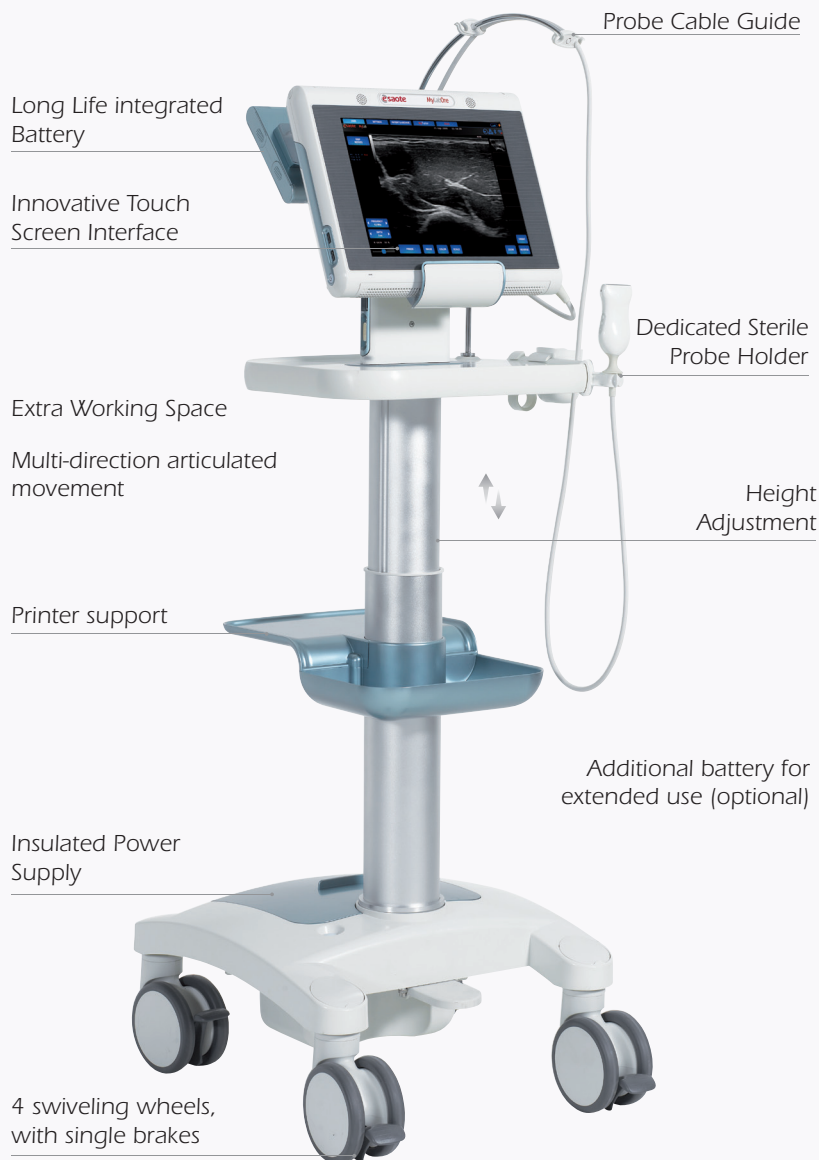
- > **Catheters insertion** for several reasons, including haemodynamic monitoring, delivery of blood products and drugs (for example, chemotherapy and antibiotics), haemodialysis, total parenteral nutrition, and management of perioperative fluids.



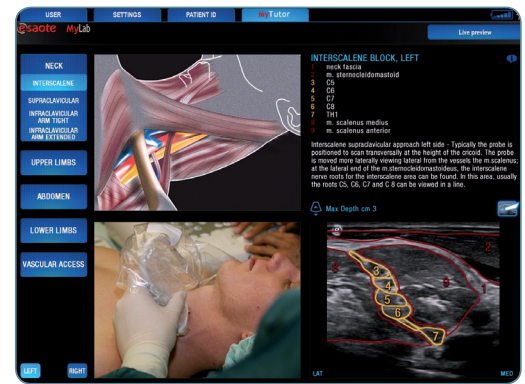
## eSaote

## Your Needs, **One Solution**

- High Technology and simplicity at the same time
- Dedicated interface and settings
- Superior Image quality and unmatched high- frequency range (up to 22 MHz)
- Extreme Portability and Flexibility of use
- Up-to-date connectivity and Data Management Solutions (Wireless, LAN, integrated database)
- Complete range of Probes



This product is not yet available for sales in USA.



- > Application-dedicated on-board tutorial
- > "How to do" reference pictures
- > Customizable operational tips
- > Anatomical atlas and comparison with real-time scanning

